

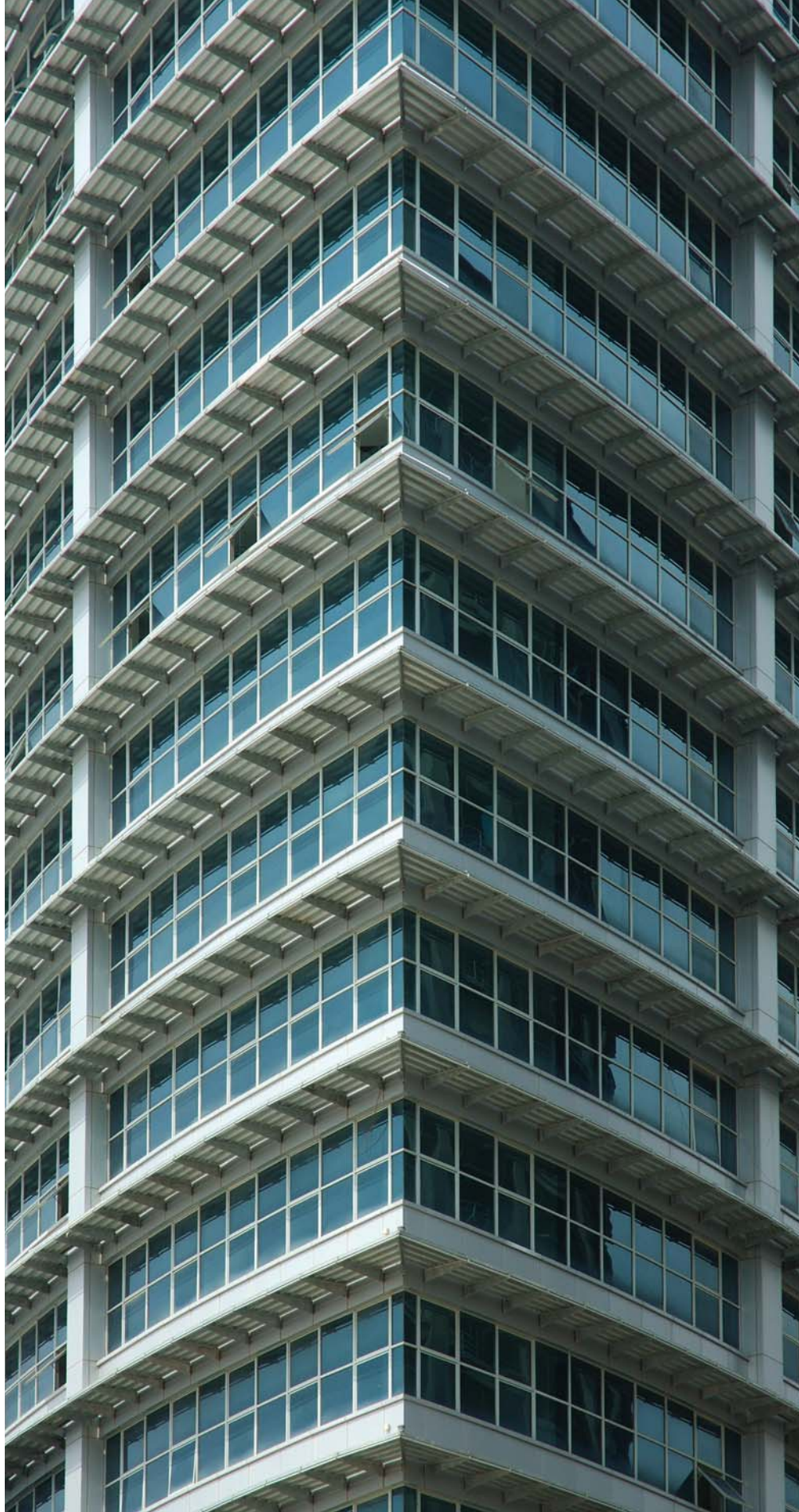


**Allux**  
**Metal ceiling systems**

Zagorska 22  
10297 Jakovlje - Zagreb

Tel.:+385 1 33 55 056  
Fax:+385 1 33 55 058  
e-mail: [allux@zg.htnet.hr](mailto:allux@zg.htnet.hr)

[www.allux.hr](http://www.allux.hr)



**SUN LOUVRES**





## USE ALLUX PRODUCTS FOR YOUR TECHNICAL AND CONSTRUCTIVE SOLUTIONS

Allux sun louvre systems and facade cladding systems is a unique system based on two components: a standard panel C84 and a stringer or H3 stringer used for:

- closed facades
- external ceilings
- fences
- vertical sun louvres
- horizontal sun louvres

All components are manufactured from aluminium alloy, a high-quality material resistant to corrosion; colours applied by using the coil-coating process.

Allux aluminium ceilings for exteriors are manufactured from aluminium alloy resistant to corrosion, characteristic for its durability and strength.

Aluminium panel 84 mm wide and 0,7 mm thick is simply pressed on aluminium sun louvre. It is firmly fixed without screws or rivets. Panels are manufactured in all sizes. Aluminium sun louvres are installed on steel or aluminium construction . A special nylon nut separates aluminium sun louvre from the construction. Years-long guarantee of Allux building materials, lightweight (ca. 3 kg/m<sup>2</sup>), easy and quick installation and wide range of colours resistant to UV-radiation provide ideal materials for designing aluminium sun louvres.

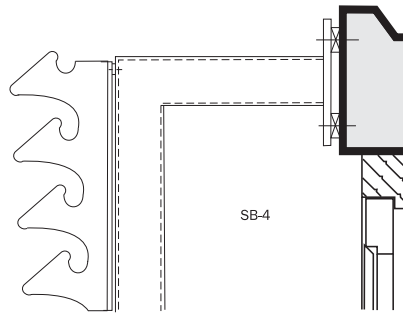
Our goal is fast and professional consulting, high-quality products and punctual delivery.

PVF2 resistant to UV-radiation. All types of external aluminium ceilings are wind resistant.

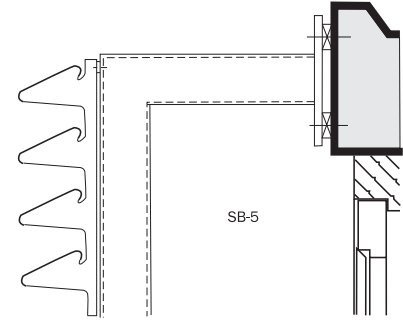


# SUN LOUVRES

## Product information



Vertical SB-4



Vertical SB-5

Simple planning makes this system suitable for every space. Vertical sun louvres is a unique system based on two components: a standard panel C84 and a stringer.

## Features

At low sun angles we suggest vertical sun louvres combined with SB-4 stringer. Applied that way panels seem more closed. Vertical sun louvres are recommended for the west and east facades. They must have a large surface because of the high sun angle. Aside from their unique design and a variety of systems, sun louvres are manufactured in a wide range of colours.

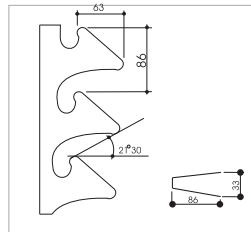
Because the reverse face of Allux profiles is always white the optimum daylight is evenly diffused in the space. Colours resistant to all weather conditions, corrosion and UV-radiation.

At low sun angles we suggest vertical sun louvres combined with SB-5 stringer. Due to the stringer panels are more horizontal and we have a view. Vertical sun louvres are recommended for the west and east facades. They must have a large surface because of the high sun angle. Aside from their unique design and variety of systems, sun louvres are manufactured in a wide range of colours.

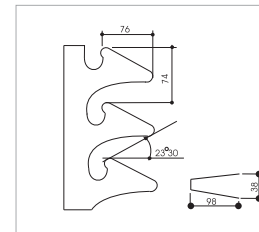
Because the reverse face of Allux profiles is always white the optimum daylight is evenly diffused in the space. Colours resistant to all weather conditions, corrosion and UV-radiation.

## Components

Aluminium panel C84 with SB-4 stringer imply easy installation and reduced building costs.



Aluminium panel C84 with SB-5 stringer imply easy installation and reduced building costs.



## Technical data

Aluminium panel 84 mm wide, 16 mm high and 0,7 mm thick. SB-4 stringer 1,00 mm thick. Panels are manufactured on request.

Aluminium panel 84 mm wide, 16 mm high and 0,7 mm thick. SB-5 stringer 1,00 mm thick. Panels are manufactured on request.

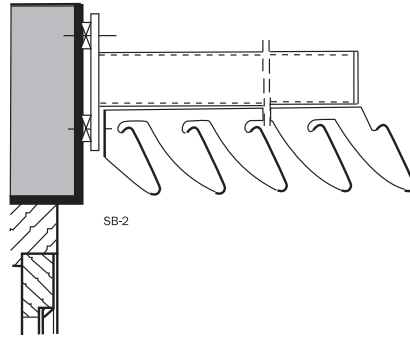
# SUN LOUVRES

## Product information

## Features

## Components

## Technical data

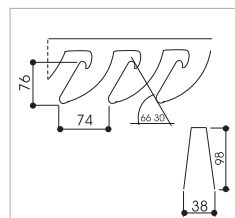


## Horizontal SB-2

Simple planning makes this system suitable for every space. Horizontal sun louvres is a unique system based on two components: a standard panel C84 and stringer.

For horizontal sun louvres we use SB-2 stringer. During summer months horizontal sun louvres are the most efficient shading system for the south buildings facades (over winter they can be designed to allow the sunlight in). Panels reflect direct sun's rays as a diffused light inside the space. For this reason we have a good lighting even in bad weather. Due to their open structure there is no impeding of fresh airflow or overheating and natural ventilation is possible. Aside from their unique design and a variety of systems, sun louvres are manufactured in a range of colours. Because the reverse face of Allux profiles is always white the optimum daylight is evenly diffused in the space. Colours resistant to all weather conditions, corrosion and UV-radiation.

Aluminium panel C84 with SB-2 stringer imply easy installation and reduced building costs.



Aluminium panel 84 mm wide, 16 mm high and 0,7 mm thick. H3 stringer 1,00 mm thick. Panels are manufactured on request.

# FACADE CLADDING H3 STRINGER

## H-3 Stringer

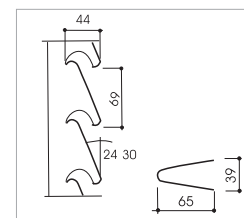
Panel C84 combined with H3 stringer is used for facade cladding. Facade cladding systems are perfect for renovation of houses, industrial plants, commercial and public buildings. Panels designed like screens give facades a new attractive look.

Allux facade cladding systems are cost-efficient and suitable for a wide variety of applications.

Most important features: durability, wind resistance, lightweight on m2, a flat look.

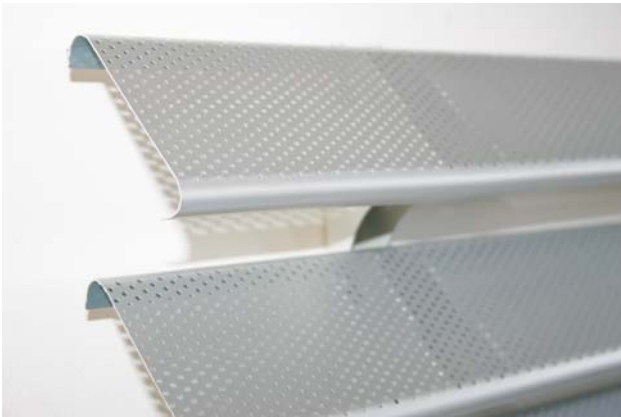


Aluminium panel C84 with H3 stringer imply easy installation and reduced building costs.



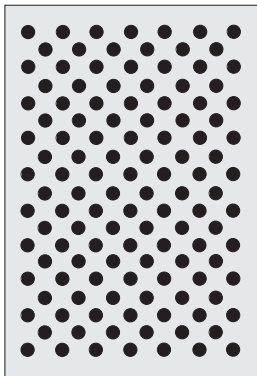
Aluminium panel 84 mm wide, 16 mm high and 0,7 mm thick. H3 stringer 1,00 mm thick. Panels are manufactured on request.

## PERFORATED PANELS



Simple planning makes this system suitable for every space. Sun louvres is a unique system based on two components: a standard perforated panel C84 and a stringer.

<b>Material:</b>	aluminium
<b>Weight:</b>	0,6 mm -6,16 kg/m <sup>2</sup> 0,7 mm -7,17 kg/m <sup>2</sup>
<b>Application:</b>	sun protection
<b>Lenght:</b>	max 6 m
<b>Finishing:</b>	standard perforation



## SLIDING SHUTTERS



Sliding shutters are manufactured from extruded aluminium profiles. Two types of profile are used for making sliding shutter frames depending on the shutter height, width and weather conditions:

- profile 40x50 mm with fixed stringers
- profile 40x60 mm with fixed stringers



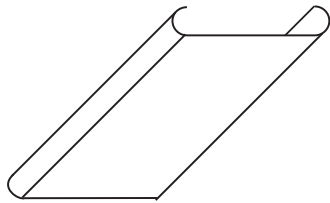
### Features

Perforated sun louvres consist of perforated panel C84 and a stringer (SB-4, SB-5, SB-2). Panels can be installed horizontally, vertically or angled. Sun louvres can be installed as a partition, partition wall or parapet wall when we want to divide a space and still maintain a good view and air interchange. As a decorative element this product is a contrast to monotone cladding.

#### Allux sliding shutters

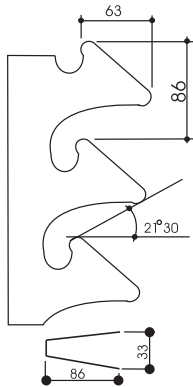
The system, vertically mounted to the facade, gives architects the opportunity to focus on privacy and sun protection. Allux sliding shutters are manufactured from high-quality aluminium materials and are suitable for different types of buildings. They can be incorporated in the early stage of project.

# ALLUX SUN LOUVRES AND FACADE CLADDING



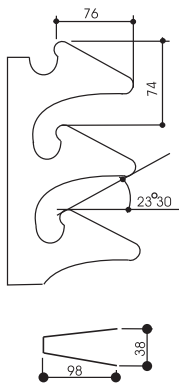
## Aluminium panel C84

Aluminium thick 0,70 mm  
Maximum length 6 m  
Coil-coated reverse face



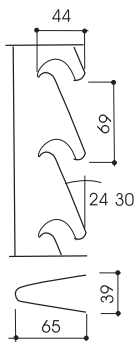
## Vertical stringer SB-4

Module 86 mm  
Aluminium thickness 1,00 mm



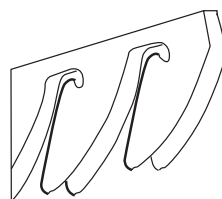
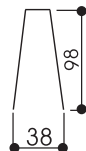
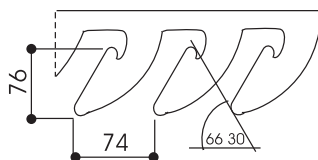
## Vertical stringer SB-5

Module 74 mm  
Aluminium thickness 1,00 mm



## Facade cladding H3 stringer

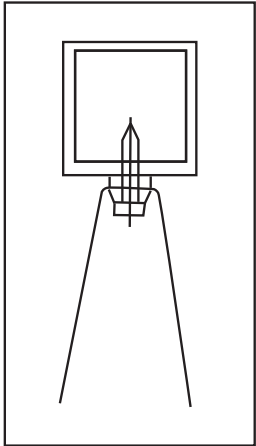
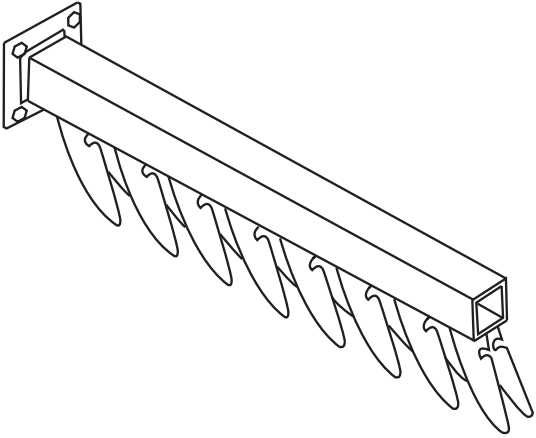
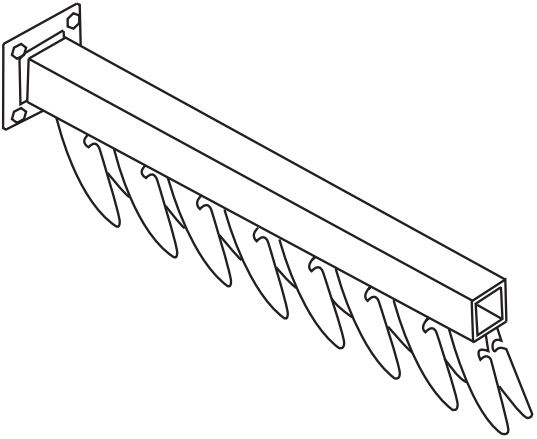
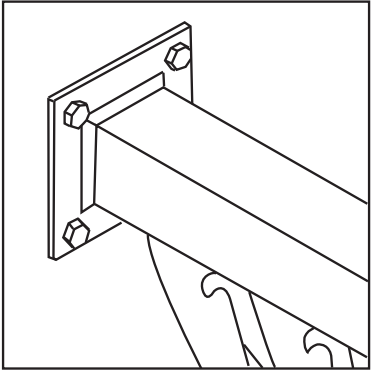
Module 69 mm  
Aluminium thickness 1,00 mm



## Horizontal stringer SB-2

Module 74 mm  
Aluminium thickness 1,00 mm

# DESIGN SAMPLE WITH SB-2 STRINGER





# ALLUX SUN LOUVRES





# ALLUX SUN LOUVRES









**PRODUCTS** - aluminium panels, sport panels, aluminium facades, square and rectangular tiles, Brisoly sun louvres, open cell ceilings, drywall profiles, aluminium shades, special ceilings, profiles by order

**EVERYTHING FROM ONE SINGLE SOURCE**

- flexible manufacturing
- fast response to enquires
- all parts compatible
- fast planning and performance

**OWN FIELD STAFF**

- consultancy on site
- help in solving problems
- individual customer consultancy

**MODERN MACHINERY**

- precision
- quality
- high accuracy
- fast performance

**OWN DELIVERY**

- fast and punctual delivery
- delivery direct to the construction site

**WHY CHOOSE ALLUX**

- big enough
- small enough to respond fast, flexibly and with no red tape

**INNOVATIVE STAFF**

- high efficiency
- new ideas and solutions

**WIDE RANGE OF PRODUCTS**

- manufacturing constructions by order
- planning, realization and manufacturing from one single source

**ONGOING PRODUCT DEVELOPMENT**

- products with modern design
- environment-friendly materials
- constant product improvements
- certified products

**CUSTOMER SERVICE**

- satisfied customers
- fast response to all enquires
- competent persons to contact



**Your partner for metal ceilings**

**Allux - Metal ceiling systems**

Zagorska 22, 10297 Jakovlje - Zagreb  
Tel.:+385 1 33 55 056 Fax:+385 1 33 55 058  
e-mail: allux@zg.htnet.hr  
www.allux.hr